

USA & GLOBAL  
MANUFACTURING



YEARS *of* INNOVATION



# Spring FEATURED PRODUCTS

April 5, 2021 to June 30, 2021

[www.winholt.com](http://www.winholt.com)

800.444.3595 fax: 516.921.0538  
Send POs to [orders@winholt.com](mailto:orders@winholt.com)



Order Status



BIM | CAD | MOBILE

# NEW

# PRODUCTS



## PROPANE TANK STORAGE CAGE

**SC-1740-51H-2S**

Dimensions: 30"W x 45"L x 52"H

Heavy duty steel construction. Storage of tanks for BBQ grills, patio heaters or any equipment that uses 12.125" W x 17.625"H tanks. Safeguards to prevent tampering and theft. Two shelves for double the storage capacity. Unit holds 2 deep x 3 wide, on each shelf, total of 12 per unit.

**In Stock Ready to Ship**



## STAINLESS STEEL HAND SANTIZER STAND

**SS1212DT**

Dimensions: 12"W x 12"L x 41.25"H



Sanitary stainless steel construction, free standing unit, 12" x 12" square base. Versatile stand can hold many sizes of hand sanitizer, easily adjusts to fit any height container up to 16". Standard lead time applies.

**MADE IN THE USA**

## E-COMMERCE PICKING FORFILLMENT & STOCK CART

### 16-60-6W-2SDR-PBX-KT

Dimensions: 16"W x 63 $\frac{5}{16}$ "L x 55"H

Versatile U-Boat with tow removable shelves and handles, converts to meet the needs of changing merchandise. Use for order picking or backroom storage for future front of the house pack out. Heavy duty steel construction, base with diamond steel deck. Powder coated aluminum gray. Ladder holder bracket allows you to carry a step ladder. Bag holder offers convenience place to access bags for order picking and packaging.

**In Stock Ready to Ship**



## STEEL CUSTOMER BENCH

### BENCH-2248

Dimensions: 47"W x 17.57"L x 33.31"H

Give your customers a place to sit down and rest or while waiting or a pickup. Steel bench, perforated seating and back rest. Powder coated gray. Leveling feet. Ships set up ready to use.

**In Stock Ready to Ship**



orders@winholt.com

# HEATER

# PROOFERS

Heater Proofers Forced air design provide even heat distribution. Clear Lexan Door. Easy dual proof/heat control: "Proof/Humidity" mode up to 95% humidity at 110°F(43°C), "Heat" mode: Maximum temperatures up to 180°F (82°C), Electrical: 120 VAC-60 Hz, 14 amps- 1440 Watts- Standard 110 outlet.



## KNOCK-DOWN HEATER PROOFER

**MODEL NHPL-1834-KD-E**

Non-Insulated Unit  
Assembles in 30 minutes!  
Analog Drawer, Ships KD to save on freight!  
Pan Capacity: (34) 18" x 26"  
Dimensions: 21"W x 30¾"L x 66½"H

**In Stock Ready to Ship  
WHILE SUPPLIES LAST**



## INSULATED HEATER PROOFER

**MODEL INHPL-1836C**

Insulated Unit  
Analog Drawer, Corner Bumpers  
Pan Capacity: (35) 18" x 26"  
Dimensions: 21"W x 30¾"L x 67¼"H  
**Ships Beginning of May**

## UNIVERSAL RUNNER HEATER PROOFER

**MODEL NHPL-1825-UNC**

Non-Insulated Unit  
Analog Drawer, Corner Bumpers  
Pan Capacity: (28) 18" x 26"  
Dimensions: 24¼"W x 29½"L x 70"H  
**Ships Beginning of May**



orders@winholt.com



Aluminum enclosed mobile cabinets stores and transports goods, perfect for meal delivery, sanitary and rustproof. **MADE IN THE USA**

## ENCLOSED MOBILE CABINETS

All welded reinforced non-insulated aluminum. 1-1/2" spacing between runners. Maneuverable on (4) 5" polyurethane swivel plate double ball race casters.



### MODEL EC1840-C-MFG

21" W x 27" L x 68" H  
Capacity 40 18" x 26" Trays  
Standard lead time

### MODEL EC1816-C

21" W x 27" L x 32"  
Capacity 16 18" x 26" Trays  
Standard lead time

### MODEL EC1824-C

21" W x 27" L x 44"  
Capacity 24 18" x 26" Trays  
Standard lead time

### MODEL EC1832-C

21" W x 27" L x 56"  
Capacity 32 18" x 26" Trays  
Standard lead time



Also available with a clear lexan door  
great for on-line order pick-up!

EC1840-C-LD  
Call For Pricing



MODEL EC1816-C  
Holds 16 Trays



MODEL EC1824-C  
Holds 24 Trays



MODEL EC1832-C  
Holds 32 Trays



MODEL EC1840-C-MFG  
Holds 40 Trays

# BANQUET

# CATERING

## HEAVY DUTY QUEEN MARY BANQUET CARTS



### Stainless Steel

#### MODEL BNQT-3-SS

28" W x 60" L x 65<sup>7</sup>/<sub>8</sub>" H, 3 SHELVES

#### MODEL BNQT-4-SS

28" W x 60" L x 65<sup>7</sup>/<sub>8</sub>" H, 4 SHELVES

#### MODEL BNQT-5-SS

28" W x 60" L x 65<sup>7</sup>/<sub>8</sub>" H, 5 SHELVES

### Aluminum

#### MODEL BNQT-3

28" W x 60" L x 65<sup>7</sup>/<sub>8</sub>" H, 3 SHELVES

#### MODEL BNQT-4

28" W x 60" L x 65<sup>7</sup>/<sub>8</sub>" H, 4 SHELVES

#### MODEL BNQT-5

28" W x 60" L x 65<sup>7</sup>/<sub>8</sub>" H, 5 SHELVES



All welded construction in stainless steel or aluminum. Standard shelf configuration, 3 lips flanged up and front lip down. Wrap around bumper and welded handle. 3 shelf- 27" between shelves, 4 shelf- 17<sup>19</sup>/<sub>32</sub>" between shelves, 5 shelf- 13<sup>1</sup>/<sub>2</sub>" between shelves. Standard lead time applies.

**MADE IN THE USA**

## BEVERAGE COUNTER



### MODEL STCT-3072-BC-R - Sink on right

### MODEL STCT-3072-BC-L - Sink on Left

Dimensions: 30" W x 72" L



Stainless beverage counter 14GA top with 16GA sides. 10" H backsplash with 2" return. Sink is 14" x 16" x 12" Deep available on the left (L) or right (R) side. No drip marine edge on 3 sides, URN trough. GFI duplex outlet mounted in backsplash, hardware sold separately. Standard lead time applies.

**MADE IN THE USA**



orders@winholt.com



## STAINLESS STEEL UTILITY CARTS



Two Shelves

**MODEL UC-2-1832SS**

18" W x 38" L x 37½" H

**MODEL UC-2-2133SS**

21" W x 39" L x 37½" H

**MODEL UC-2-2149SS**

21" W x 55" L x 37½" H

Three Shelves

**MODEL UC-3-1832SS**

18" W x 38" L x 37½" H

**MODEL UC-3-2133SS**

21" W x 39" L x 37½" H

**MODEL UC-3-2149SS**

21" W x 55" L x 37½" H



All welded design, great cart for healthcare, schools, hotels and correctional facilities (ask about the correctional package add-on). 16 Gauge shelves and tubing. Units have rolling capacity of 1200lbs. Dimensions: 26⅞"W x 24"L x 44"H. Picture shown with two shelves. Standard lead time applies.

**MADE IN THE USA**

## SHEET PAN TRUCKS



**MODEL D2027A-BPC**

CAPACITY 300LBS

Dimensions: 18"W x 27¼"L x 52"H

All welded aluminum construction. Storing and transporting 18" x 26" trays. Top cross bars for added tray capacity. Standard lead time applies.

**MADE IN THE USA**





# FOOD

# STORAGE

## BULK MOVERS



All welded aluminum frame. Tub is sanitary, washable and steam cleanable polyethylene. Standard lead time applies.

### MADE IN THE USA

#### 6 Bushel

CAPACITY 500LBS

Dimensions: 24"W x 33"L x 36"H

#### MODEL 30-6-A-BL

Blue Tub

#### MODEL 30-6-A-RD

Red Tub

#### MODEL 30-6-A-WH

White Tub

#### 8 Bushel

CAPACITY 743LBS

Dimensions: 22"W x 38-1/2"L x 32"H

#### MODEL 30-8-AL-BL

Blue Tub

#### MODEL 30-8-AL-RD

Red Tub

#### MODEL 30-8-AL-WH

White Tub



Ideal for all departments, - Meat, Produce, Fish and Deli - Food Preparation - Storage. Colored tubs allows you to color code by area. Perfect for ice bins.



3 bushel model also available.







## ALUMINUM LUG CART



### MODEL AL-L-6 - HOLDS (6) LUGS

Dimensions: 19"W x 27"L x 71"H

All welded aluminum construction. For transporting and storage of all types of products, these work saving mobile carts minimize lifting and carrying. Standard lead time applies. Lugs sold separately.

**MADE IN THE USA**

## FRENCH FRY RACKS



### MODEL FFR-18

HOLDS (18) BASKETS

Dimensions: 18"W x 27¼"L x 52"H

### MODEL FFR-27

HOLDS (27) BASKETS

Dimensions: 24¾"W x 27½"L x 52"H



All welded aluminum construction. Perfect for fast-paced, busy operations. Suited for both fries and frozen products in all stages of prep. Removable drip pan for easy cleaning and two handles for maneuvering. Baskets not included. Standard lead time applies.

**MADE IN THE USA**

# STAINLESS STEEL PAN & OVEN RACKS



PAN RACK  
ALL WELDED STAINLESS STEEL



**MODEL SS-1820B**

Heavy duty stainless steel frame with welded angle slides, 3" spacing between runners. 5" polyurethane swivel stem casters.  
Capacity: (20) 18" x 26" sheet pans, Wt. capacity per runner 30lbs  
Dimensions: 21"W x 26"L x 69¾"H  
Standard lead time

**MADE IN THE USA**

HD PAN RACK  
STAINLESS STEEL  
REINFORCED UPRIGHTS



**MODEL SS-1818B-XB**

Heavy duty aluminum frame with welded angle slides, 3" spacing between runners. 5" polyurethane swivel stem casters.  
Capacity: (18) 18" x 26" sheet pans, Wt. capacity per runner 60lbs  
Dimensions: 21"W x 26"L x 69¾"H  
(SS-1820B-XB Shown)  
Standard lead time

**MADE IN THE USA**



USA & GLOBAL  
MANUFACTURING



# OVEN RACK STAINLESS STEEL NESTING

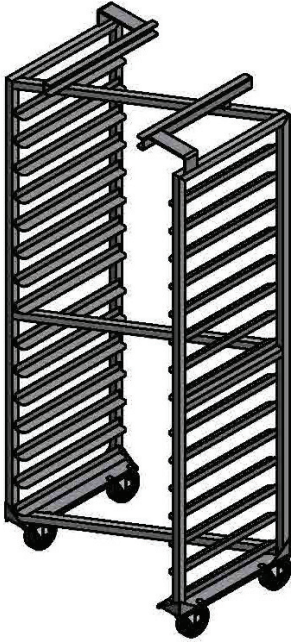


## MODEL SOVS2615BX2-N

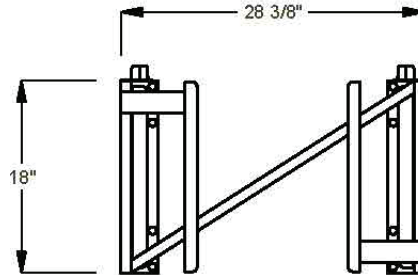
Stainless steel oven rack, single, side loading, 15 pan capacity. Designed for a Baxter oven, Z nesting design to save space. B lift design. For a complete drawing for compatibility please contact sales@winholt.com Dimensions: 18"W x 28<sup>3/8"</sup>L x 69<sup>13/16"</sup>H

**In Stock Ready to Ship!**

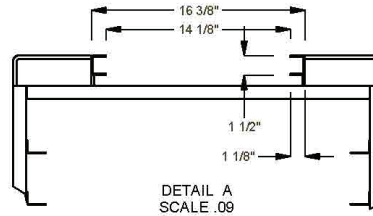
**MADE IN THE USA**



Top View



Side View



# STAINLESS STEEL NESTING PAN RACK

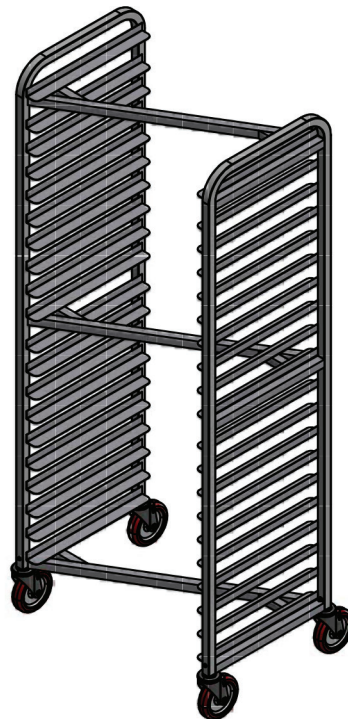


## MODEL SS-2620N

Racks nest to save valuable floor space. 3" spacing between runners. Capacity of (20) 18" x 26" sheet pans. 5" swivel stem casters with polyurethane wheels. Dimensions: 18"W x 20-3/8"L x 70"H

**In Stock Ready to Ship!**

**MADE IN THE USA**



orders@winholt.com





# TRENDING

# PRODUCTS



PAN RACK  
ALL WELDED ALUMINUM



**MODEL AL-1820B**

Aluminum frame with welded angle slides, 3" spacing between runners. 5" polyurethane swivel stem casters.  
Capacity: (20) 18" x 26" sheet pans, Wt. capacity per runner 30lbs  
Dimensions: 21"W x 26"L x 69¾"H  
Standard lead time

**MADE IN THE USA**

PAN RACK  
COVER  
**MODEL SRC-58-3Z**  
23"W x 28"L x 61"H



## PLATTERS & TRAYS

### Sani-Platters

**MODEL WHP-1224**

Dimensions: 12"W x 24"L x 3/4"H

Constructed of injection molded, super hi-impact polystyrene with extra ribbing for rigidity and extra strength.

Sold in case of 12 sani-platters

**In Stock Ready to Ship!**



### Aluminum Trays

**MODEL AP-1826**

18"W x 26"L x 1"H Sold by the case of 12 units.  
FOB CA & TX





## Custom Stainless Steel Fabrication

If you do not see it, contact us, we will design and build it for you!

### STAINLESS STEEL WORK TABLES



All welded stainless steel 16 gauge construction. All TIG welded and shipped set up. High polish finish. Stainless steel hat channels deaden sound and reinforce the top to maintain a level work surface. Standard lead time applies.

#### MADE IN THE USA

Work Table, 16/304 stainless steel top, open with cross-rails & legs with clad bullet feet

**MODEL DTR-3036** 36" W x 30" D x 34" H

**MODEL DTR-3048** 48" W x 30" D x 34" H

**MODEL DTR-3060** 60" W x 30" D x 34" H



Work Table, 16/304 stainless steel top, fixed open under-shelf & legs with clad bullet feet

**MODEL DTS-3036** 36" W x 30" D x 34" H

**MODEL DTS-3048** 48" W x 30" D x 34" H

**MODEL DTS-3060** 60" W x 30" D x 34" H

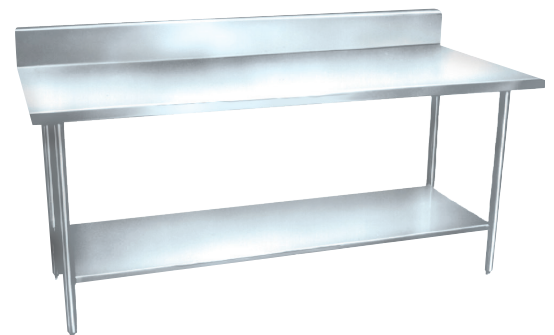


16/304 stainless steel top with 6" H backsplash, fixed open under-shelf & legs with adjustable clad bullet feet

**MODEL DTSBB-3036** 36" W x 30" D x 34" H

**MODEL DTSBB-3048** 48" W x 30" D x 34" H

**MODEL DTSBB-3060** 60" W x 30" D x 34" H



USA & GLOBAL  
MANUFACTURING



orders@winholt.com

# STAINLESS STEEL EQUIPMENT STANDS

## EQUIPMENT STANDS



### EQUIPMENT STAND CONVECTION OVEN



#### MODEL ES-CO-3048M

Dimensions: 30" W x 48" L x 29" H

Designed to fit most convection ovens. Convenient right hand pan slides, expands storage area. Constructed of all welded 16 gauge stainless steel. Standard lead time applies.

**MADE IN THE USA**



### EQUIPMENT STANDS



All welded stainless steel 16 gauge construction. Rear and end-splash turned up 2". All have a 24" working height. Lower shelf for additional storage. Standard lead time applies.

**MADE IN THE USA**

MODEL ES-M-2428 24" W x 28" L x 24" H

MODEL ES-M-2436 24" W x 36" L x 24" H



### EQUIPMENT STAND SCALE



#### MODEL ES-S1622

Dimensions: 22" W x 16" L x 38" H

Ideal to hold scales. 38" working height, two lower shelves for storage, 13" between shelves. Standard lead time applies.

**MADE IN THE USA**



## EQUIPMENT STAND MACHINE

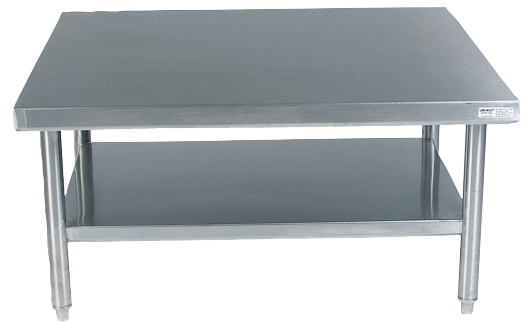


### MODEL ES-S2428H28

Dimensions: 24" W x 28" L x 28" H

Ideal 24" x 28" top for mixer or grinder. 28" working height. Lower shelf for storage. 1000lb weight capacity. 16 gauge stainless steel. Standard lead time applies.

**MADE IN THE USA**



## EQUIPMENT STANDS MIXER/SLICER



### MODEL ES-MX2424-14GA

24" W x 24" L x 24" H

### MODEL ES-MX2430-14GA

24" W x 30" L x 24" H

### MODEL ES-MX3030-14GA

30" W x 30" L x 24" H

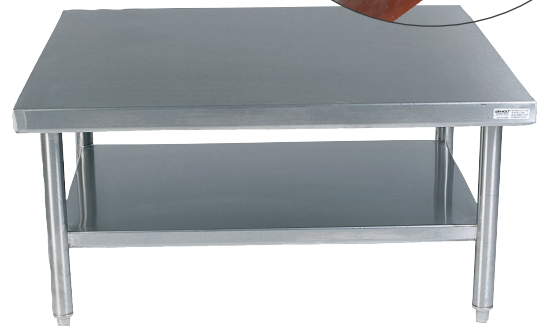
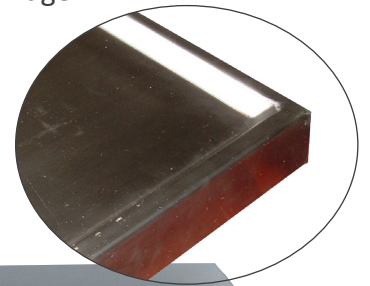
### MODEL ES-MX3036-14GA

30" W x 36" L x 24" H

All welded design, 14 gauge top with 16 gauge under-shelf. 12" between the shelf and table top. No drip marine edge on the perimeter of the table top. Standard lead time applies.

**MADE IN THE USA**

Marine  
Edge



orders@winholt.com

# TRENDING

# PRODUCTS

## STAINLESS STEEL MOBILE HAND SINK



## Sanitary Solutions!

Efficient solution for facility areas with restricted or limited availability of plumbing, while ensuring appropriate levels of hygiene. Faucet blends hot and cold water. UL listed water heater and pump. 5 gallon clean water storage and 6 gallon waste water storage. Soap dispenser and paper towel holder. Standard lead time applies.



## MADE IN THE USA

**Model STCT-BHD2426PUMP-KG**

**Model STCT-BHD2426PUMP-AEF-KT**  
Unit with Electronic Eye Faucet



5 Gallon clean water storage and 6 gallon waste water storage. Faucet blends hot and cold water. 110° F water supplied at .32 GPM

**Model STCT-BHD2426PUMP-WH**  
Economy Mobile Hand Sink

6" boxed back splash, 5 Gallon clean water storage and 6 gallon waste water storage. Faucet blends hot and cold water. 110° F water supplied at .32 GPM, UL listed water heater and pump.

## SANITIZING CART



## Sanitize Front Of The Store - Shopping Carts, Checkout Counters, Fixtures, etc.

Lightweight aluminum construction makes this cart easy to maneuver in store or out. Features top tray, two shelves for additional storage, garbage and paper towel holder. Holds everything you need to keep your store safe and clean. Standard lead time applies. **Model D-2032-MP**  
20-1/2" W x 34-7/32" L x 40-1/8" H

## MADE IN THE USA







## GRAB & GO SOLUTIONS

### INSULATED TABLE DISPLAY MERCHANDISER



#### MODEL SSMIT-4848-MLC-SNG-KIT

Dimensions: 48"W x 48"L x 40¼"H

All welded stainless steel construction. Insulated ice pan, keeps food cold and creates a self service display. Mobility allows to be used in any location. Basket drain and shut off valve at the bottom. Includes (1) AL-L-1 with gray lug for draining. Standard lead time applies.

#### MADE IN THE USA



Shown with AL-L-1 under display for draining, ships with gray lug.

### INSULATED ADJUSTABLE TABLE DISPLAY MERCHANDISER



#### MODEL SSMIT-3636MLC-CAN-ADJ

Dimensions: 36"W x 36"L x 51½"H

All welded stainless steel construction. Insulated removable ice bin keeps food cold and offers a self serve option to packaged merchandising. 2" Styrofoam installation, basket drain and shut off valve at the bottom. Includes removable lexan side panels and canopy. The table can be used flat or adjust to 7.5 ° or 15 ° angle. Standard lead time applies.

#### MADE IN THE USA

Removable lexan side panels and canopy.



orders@winholt.com





Your Signage Here



## PICKING, CURBSIDE PICK-UP, DELIVERY CART

Efficient solution for on-line order picking, and curbside pick-up, delivery. Constructed of aluminum makes it light weight and easy to maneuver. Features: writing utensil tray, paper bag holder, hooks for plastic bags- making for a perfect picking station. Bumpers prevent damage to store fixtures, two shelf structure allows for additional storage of order curbside meals and picking totes.

**MADE IN THE USA**



**MODEL ALMCS-36-224-RCUH-HF**

Dimensions: 24"W x 45¾"L x 26¼"H

**Our carts will streamline picking, curbside delivery and fulfillment, increasing production!**

## ON-LINE ORDER PICKING WORK STATION

Multi faceted order picking cart, loaded with features, an all in one work station. Streamlines the picking process and increases production. All welded aluminum, powder coated red or your store brand color, light weight and easily maneuvered. Holds 6 totes for order picking, approx. 22" L x 15.25 W x 10" H, solid top offers additional working area.

Carries everything needed to pick orders- printer basket, utility shelf, bag holder, label roll rod, paper towel rod, water holder. Vinyl grip handles assist in maneuvering the cart with ergonomic design prevents injury to associates.

**MADE IN THE USA**

**MODEL ALTPC-2536-MO**

Dimensions: 25"W x 42¾"L x 36¼"H





## FORK-LIFTABLE CAGED CART

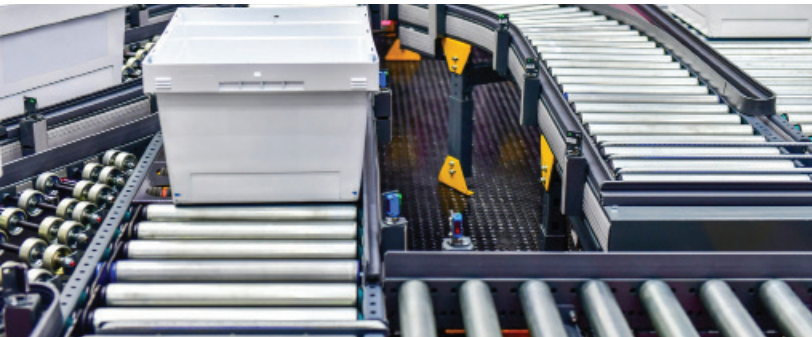
Warehouse and distribution center solution, fork-liftable cart to move more merchandise. Increased picking in the warehouses' vertical space as well as reduced manual intervention from associates.

Constructed of steel, caged on three sides to prevent merchandise from falling. Non-skid safety surface on the fold-up shelves to hold a variety of product sizes and ergonomic placed D-shaped handles. Non-skid safety step when being lifted.

**MADE IN THE USA**

**MODEL EC-3040-71H-SEC**

Dimensions: 40½"W x 44¾"L x 70¾"H



**On-line Order Surge Brings Increased Demand and We Bring You Solutions!**

We offer custom design solutions, contact us and we will design and build it for you!



# STORAGE

# SOLUTIONS

Multi-user steel lockers, all welded, ships set up ready to use. Door pulls accept padlocks for positive latching. Doors are mesh grid vented or Louvered. All have closed bases.

## MODEL WL-4

45" W X 18" D x 13.5"H

4 doors, wall mount, with garment bar

Beige

**Stock Ready to Ship!**



WL-4

## MODEL WL-21

12" W x 12" D x 78"H

3 columns, 18 door, louvered doors, Gray

**In Stock Ready to Ship!**

## MODEL WL-66

12" W x 12" D x 78"H

1 column, 6 doors, beige

**In Stock Ready to Ship!**

## MODEL WL-55 - FOB TX

12" W x 12" D x 66"H

1 column, 5 doors, beige

**In Stock Ready to Ship!**



## MODEL MSLCK-1

COMBINATION LOCK, 6+ units

**In Stock Ready to Ship!**

WL-66



WL-55



WL-21



orders@winholt.com





## STEEL RECEIVING DESKS

### MODEL RDWN-1

Dimensions: 22"W x 24"L x 12"H  
Wall mount, lockable compartment, Gray

**In Stock Ready to Ship!**



## LOCKING DRAWER CABINET

### MODEL TL-12-WM

20"W x 36"L x 47.5"H

This is an efficient solution for securing a variety of products - valuables, cash drawers, etc. Steel security cabinet, powder coated gray. 14 keys included. Weight 430lbs

**In Stock Ready to Ship!**

**While Supplies Last!**

12 Locking Compartments  
17.5" W x 4.75" H



2 Locking Compartments  
35" W x 5.25" H



USA & GLOBAL  
MANUFACTURING



# BLOW OUT



# BUYS

## WHILE SUPPLIES LAST!



### FOLDING DISTRIBUTION CARTS

Frame constructed of zinc plated steel with 3 stainless steel Shelves. Efficiently move product form distribution centers to selling refrigeration. Folds for storage. 6" x 2" phenolic wheels. Load Capacity 500lbs

**ALL In Stock Ready to Ship!**

#### Egg Distribution

**MODEL DC-2538-EG** 24<sup>3/4</sup>"W x 38"L x 67"H

**MODEL DC-2526-EG** 24<sup>3/4</sup>"W x 26"L x 67"H

Frame constructed of zinc plated and lacquer dip finish rolled steel. Both shelves fold in and out, load capacity 1200lbs

#### Milk Distribution

**MODEL DC-3926-MC**

25<sup>5/32</sup>"W x 36<sup>9/16</sup>"L x 65"H



### UTILITY STOCK NESTING CART

Constructed of all welded steel. Zinc electroplated deck and frame. Rounded corners will not damage, doors or frames. 6" polyurethane HD casters. **FOB PA & TX**

**MODEL WMN-2448-WM**

Dimensions: 29.5"W x 54"L x 39.5"H

**In Stock Ready to Ship!**

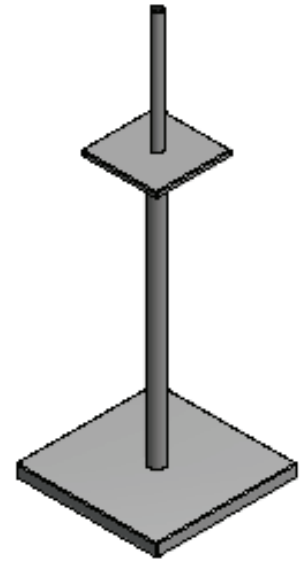


orders@winholt.com

## PLASTIC BAG HOLDER

### MODEL PBH-1515

All stainless steel construction, rubber sheet bottom underneath secures the stand from slipping. Post for bag is 13" H, Unit height is 43", base is 15" x 14" square



## STAINLESS STEEL DISPLAY TRAYS

### MODEL WHSSBX-612-2H

6"W x 12"L x 2"H

### MODEL WHSSBX-615-2H-2DH FOB PA

6"W x 15"L x 2"H,  
with 2 drain holes

### MODEL WHSSBX-630-2H-2DH

6"W x 30"L x 2"H,  
with 2 drain holes

### MODEL WHSSBX-830-2H-2DH FOB PA

8"W x 30"L x 2"H,  
with 2 drain holes

### MODEL WHSSP-1210-Marinade FOB PA

12"W x 10"L  
Perforated holes



## STAINLESS STEEL KNOCK-DOWN WORK TABLE



### MODEL DTSB-3672H36-KD

Dimensions: 36"W x 72"L x 36"H

Knock-down stainless steel table with under-shelf and backsplash.

**In Stock Ready to Ship!**  
**FOB PA & TX**





### **Winholt's new California location:**

651 Barrington Ave, Unit B  
Ontario, CA 91764

The recent move has doubled our facility space and has increased our manufacturing capabilities on the West Coast!



### **Winholt's Texas Expansion:**

Our Dallas Texas facility expansion opened in October, it has added significant manufacturing and supply chain capacity. Additional automated capital equipment has added to US manufacturing efficiencies and shortened lead times to support the country and economy in recovery.



**CONTACT US FOR ALL OF YOUR CUSTOM DESIGN REQUIREMENTS. IF YOU DO NOT SEE IT, CONTACT US, WE WILL DESIGN AND BUILD IT FOR YOU!**